



Recruitment update:

In February, **39 new participants** were recruited into OPTIMA.

Total recruitment to date: 2482

OPTIMA Main - 2070 participants

OPTIMA prelim - 412 participants



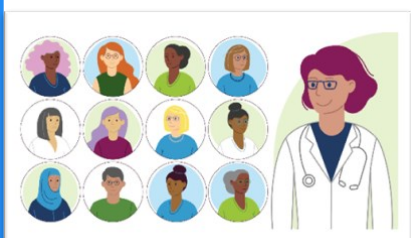
NIHR Associate PI Scheme

The NIHR Associate Principal Investigator scheme aims to develop junior doctors, nurses and other healthcare professionals to become PI's in the future. Additionally it provides formal recognition for trainees' trial engagement and is approved by the Royal Colleges of Physicians, Radiologists and Surgeons. It follows a successful year-long pilot in surgery.

We encourage our PI's in OPTIMA to consider adopting this scheme within their own centres. This will hopefully be good for recruitment to OPTIMA as well as helping juniors to work on the largest adjuvant trial in the current breast cancer portfolio in the UK.

More information can be found on the NIHR website:-
<https://www.nihr.ac.uk/documents/associate-principal-investigator-pi-scheme/25040>

OPTIMA animated patient video goes live.....



Launch of the animated OPTIMA PIS video is imminent (and hopefully, live by the time you read this!) We've worked closely with

members of the Independent Cancer Patient Voice to produce this short video to accompany the full written Patient Information Sheet. Please share it with potential OPTIMA patients.

Whilst patients and their family and friends are the primary audience, we encourage you to share it widely amongst your breast colleagues, as it offers an easy means to pick up the nuts and bolts of OPTIMA – it's rationale and what's involved in taking part.

The video is available on the [OPTIMA website](#) and on YouTube by searching [OPTIMA Breast Study](#).

As this is a new tool to support recruitment, we'd appreciate hearing your feedback, please contact carmel.conefrey@bristol.ac.uk

Easter 2021



Please be aware the Warwick Clinical Trials Unit (WCTU) will be closing for an extended period over Easter 2021. The OPTIMA trial team will also be out of office during this period.

The telephone Randomisation Service will be **closing at 5pm on Thursday 1st April 2021** and will reopen at **9am on Monday 12th April 2021**.

- ⇒ UK Sites **won't** be able to randomise any patients into the OPTIMA trial between these dates.
- ⇒ Norwegian Sites can still randomise via the online application but there will be no one in the WCTU to answer queries.
- ⇒ Any voicemails left during this time will be responded to once the unit reopens on Monday 12th April.

The Central Lab (HSL-AD) will be running as normal but allocation timelines will be altered during this week.

There will be no allocation on Monday 5th April 2021. Allocation will occur on Monday 12th April*.



**As always, there is a small chance of unexpected delays which can occur without notice. If this happens, we will keep sites as updated as possible, but please bear this in mind when booking patients in.*

Anonymisation

Please ensure that no patient identifiable information is sent to the OPTIMA trial team via email, post or otherwise.



No patient identifiable information should be sent to the WCTU or to HSL-AD. This includes in email correspondence, as well as within pathology reports sent for review alongside Tumour Samples.

WCTU and HSL-AD do not need copies of patient consent forms

This includes the consent forms and/or documentation of remote verbal consent. These should never be sent to us via email / post.

Recruitment per recruiting Site (up to 24 March 2021)

University Hospitals of North Midlands NHS Trust	66	Lister Hospital	15
Mount Vernon Cancer Centre	61	Norfolk & Norwich University Hospital	15
Addenbrooke's Hospital	60	Royal Free Hospital	15
Bristol Haematology & Oncology Centre	57	Royal Glamorgan Hospital	15
Blackpool Victoria Hospital	55	Royal Gwent Hospital	15
The Christie	53	Stepping Hill Hospital	15
Velindre Cancer Centre	53	Basingstoke and North Hampshire Hospital	14
Beatson West of Scotland Cancer Centre	50	Queens Hospital, Burton upon Trent	14
Oslo University Hospital (Norway)	50	Royal Cornwall Hospital	14
University Hospital Coventry	49	George Eliot Hospital, Nuneaton	13
NHS Lanarkshire	48	St Mary's Hospital, Isle of Wight	12
Royal Albert Edward Infirmary, Wigan	47	University College London Hospital	12
Peterborough City Hospital	40	Bradford Royal Infirmary	11
Inverclyde and Royal Alexandra Hospitals	36	St George's Hospital, London	11
Weston Park Hospital, Sheffield	34	Western General Hospital, Edinburgh	11
Wrexham Maelor Hospital, Wrexham	32	Chase Farm Hospital, Enfield (RFL)	10
Luton and Dunstable University Hospital	31	Guys Hospital	10
University Hospitals of Morecambe Bay	31	NHS Ayrshire and Aran	10
Glan Clwyd Hospital, Bodelwyddan	30	Royal Hampshire County Hospital, Winchester	10
Royal Devon and Exeter Hospital	30	University Hospital of North Tees, Stockton-on-Tees	10
Royal Shrewsbury Hospital	30	Worcestershire Royal Hospital	10
Salisbury District Hospital	30	Northumbria Healthcare NHS Foundation Trust	9
East Kent Hospitals NHS Foundation Trust	29	Airedale General Hospital, Keighley	8
Forth Valley Hospital	29	Bedford Hospital	7
The Princess Alexandra Hospital NHS Trust	29	Prince Charles Hospital, Merthyr Tydfil	7
Torbay Hospital	29	Sunderland Royal Hospital	7
Surrey and Sussex Healthcare NHS Trust	28	Weston General Hospital, Weston Super Mare	7
Derriford Hospital, Plymouth	27	Whittington Hospital, London	7
Macclesfield District Hospital	27	Basildon University Hospital	5
Musgrove Park Hospital, Taunton	25	Dumfries and Galloway Royal Infirmary	5
Ostfold Hospital, Kalnes (Norway)	25	Hinchingbrooke Hospital, Huntingdon	5
Maidstone Hospital	24	King's Mill Hospital	5
Russells Hall Hospital, Dudley	24	Northern Lincolnshire and Goole	5
Queen Elizabeth Hospital, Birmingham	23	Sahlgrenska University Hospital (Sweden)	5
Queen Elizabeth Hospital, Gateshead	23	East Sussex Healthcare NHS Trust	4
Churchill Hospital, Oxford	22	Nottingham University Hospital	4
Clatterbridge Cancer Centre	22	Pennine Acute Hospitals, North Manchester	4
Milton Keynes University Hospital	22	Royal Derby Hospital	4
New Cross Hospital, Wolverhampton	21	Worthing Hospital	4
North Middlesex Hospital	21	Charing Cross, London	3
Barnet Hospital (RFL)	20	Chesterfield Royal Hospital	3
Frimley Park Hospital, Surrey	20	Haukeland University Hospital (Norway)	3
Southampton General Hospital	20	Kidderminster Hospital	3
Darlington Memorial Hospital	19	Queen's Hospital, Romford	3
Medway Maritime Hospital, Gillingham	19	Singleton Hospital, Swansea	3
Royal United Hospital, Bath	18	Stavanger Hospital (Norway)	3
Belfast City Hospital	17	Ulster Hospital	3
Great Western Hospital, Swindon	17	University Hospital of North Norway	3
Leighton Hospital	16	Ysbyty Gwynedd, Bangor	3
New Victoria Hospital, Glasgow	16	Birmingham City Hospital	2
Queen Elizabeth Hospital, King's Lynn	16	Broomfield Hospital	2
Sorlandet Hospital, Kristiansand (Norway)	16	Doncaster Royal infirmary	2
York Hospital	16	Alexandra Hospital, Redditch	1
Darent Valley Hospital, Dartford	15	Wycombe Hospital	1

OPTIMA office 02476 151948 optima@warwick.ac.uk

QRS 01179 287296 carmel.conefrey@bristol.ac.uk